

# Contact

## **OWL University of Applied Sciences and Arts**

Department of Electrical Engineering and Computer Science  
Campusallee 12  
32657 Lemgo, Germany

### **Dean's Office**

Ms. Beate Rübner  
T: +49 (0) 5261 702-3501  
dekanat.eecs@th-owl.de

### **Further information available at:**

[www.th-owl.de/en/eecs](http://www.th-owl.de/en/eecs)

### **Academic Advisor**

Prof. Dr. Dr. Dr. habil. Carsten Röcker  
T: +49 (0) 5261 702-5488  
carsten.roecker@th-owl.de



# Information Technology

Master's Degree Program (M. Sc.) at the  
Department of Electrical Engineering and Computer Science

# Application

Please consult

[www.th-owl.de/eecs/en/studiengaenge/  
msc-information-technology/zulassung](http://www.th-owl.de/eecs/en/studiengaenge/msc-information-technology/zulassung)



**KNOWLEDGE**

Stand: 01 / 2020  
© Centrum Industrial IT (CIIT), © Cake78 - Fotolia.com, © contrastwerkstatt - Fotolia.com



# Master Information Technology

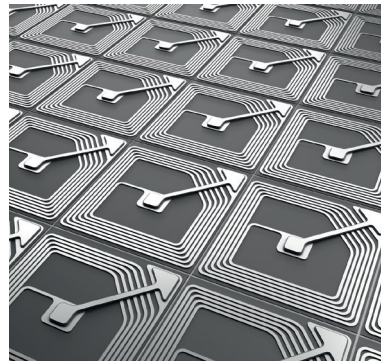
As technical systems are becoming more and more complex and at the same time increasingly important to society, there is a growing demand for well-educated engineers and computer scientists.

The mission of our Master's degree program Information Technology is to provide the industrial perspective on IT in the following fields:

- ▶ intelligent technical systems,
- ▶ distributed real-time systems,
- ▶ software engineering for embedded systems,
- ▶ wireless and wired real-time communication systems,
- ▶ IT security in embedded systems,
- ▶ real-time image processing and information fusion and
- ▶ innovation and development strategies.

Our central vision is an internet for smart machines where real-time information is permanently available in sufficient quality at all levels of automation systems.

The Master's program Information Technology prepares for leadership positions in science and industry.



## Participate in Creating the Future!

OWL University of Applied Sciences and Arts offers you ideal conditions to make a difference:

On the Innovation Campus Lemgo you encounter an environment of research and industry that involves you deeply in the development of future technologies.

After your studies you will have lots of networking opportunities to make your ideas come true. You will also find excellent prerequisites at OWL University of Applied Sciences and Arts to pursue a Ph.D.

Find out more about us and our Institutes Industrial IT (inIT) and Future Energy (iFE), the CENTRUM INDUSTRIAL IT (CIIT) and our cooperation with the Fraunhofer IOSB-INA Industrial Automation Branch at:

[www.th-owl.de/en/eecs](http://www.th-owl.de/en/eecs)

